

COLOSSAL

HIRE UNIQUE VENUES FOR YOUR EVENT AND OR PERFORMANCE

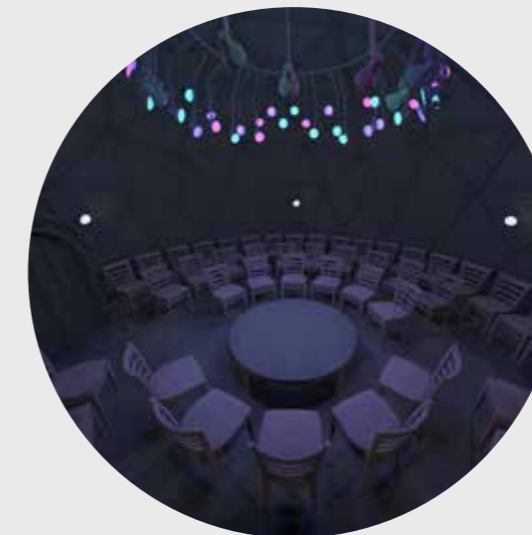
COLOSSAL is an award winning creative production company. Developed and run by Pōneke based trio: Imogen Stone, Zane Jarvie and Degge Jarvie. They are multi-disciplined project-based creatives and collaborators, who push the envelope and create high calibre productions & experiences for their audiences.

Inspired by their experiences touring and performing within Festival Gardens overseas, they've created their own bespoke portable venues and can't wait to share them with Aotearoa's artists and audiences alike!

**DRY HIRE AND FULL
PROGRAMMING/PRODUCTION
SERVICES AVAILABLE.**



THE
MAMMOTH



THE
**BLACK
HOLE**



The Observatory

THE MAMMOTH

The Mammoth is a beautifully designed, bespoke portable venue. Inherently connected to circus and the alchemy of live performance while being refined enough to be the perfect home for special events, gatherings and weddings. With its relatively small footprint, it brings a huge amount of atmosphere. The Mammoth is an elegant, versatile and transformative space.

The skin (fabric) was sewn Western Australia. All the hardware is bespoke COLOSSAL design and a total labour of love to get perfect. With the exception of the aluminium truss elements it was entirely manufactured in Pōneke

SPECIFICATIONS

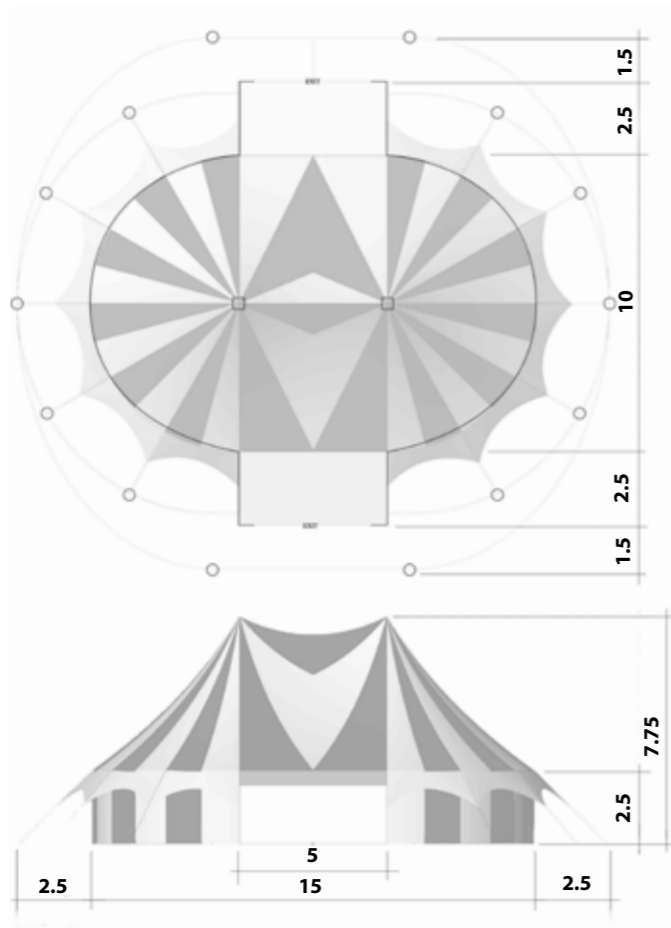
Capacity	80 - 150 pax
Full Venue set-up	7 hours
Full Venue Bump out	5 hours
Internal Dimensions	10m x 15m
Site Dimesions	18m x 21m
Internal Area	128m2
Peak Height	7.75m
Wind Rating	80kmph
Aerial Rigging	Yes

“The Mammoth created a pop-up village of fantastic fun, electric energy and loveable performances all by a crew that are a dream to work with”

- Gerry Paul, Cuba Dupa



Dimensions



All measurements in metres.

Note:

- Set-up on grass or concrete using either:
 - earth anchors (70cm engineered pegs)
 - ballast (66 x 500kg blocks)



THE BLACK HOLE

The Black Hole is a unique, modern portable venue. Absorbing audiences into its void and embracing them in a completely transportative environment. This is a geometric, intimate, architectural space. Suspended from the ceiling is a unique anglepoise lamp chandelier, built from over 50 individual steel arms with individually addressable lights illuminating the space.

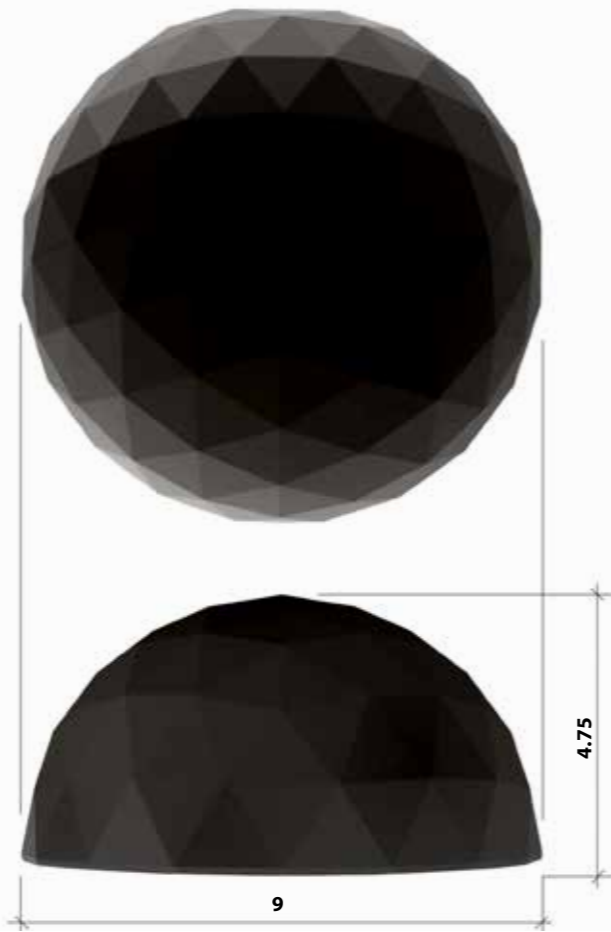
SPECIFICATIONS

Capacity	50 - 80 pax
Full Venue set-up	10 hours
Full Venue Bump out	7 hours
Diameter	9.5m
Peak Height	4.75m
Wind Rating	120kmph
Aeril Rigging	No

IN DEVELOPMENT

---READY WITH 2 MONTHS NOTICE---

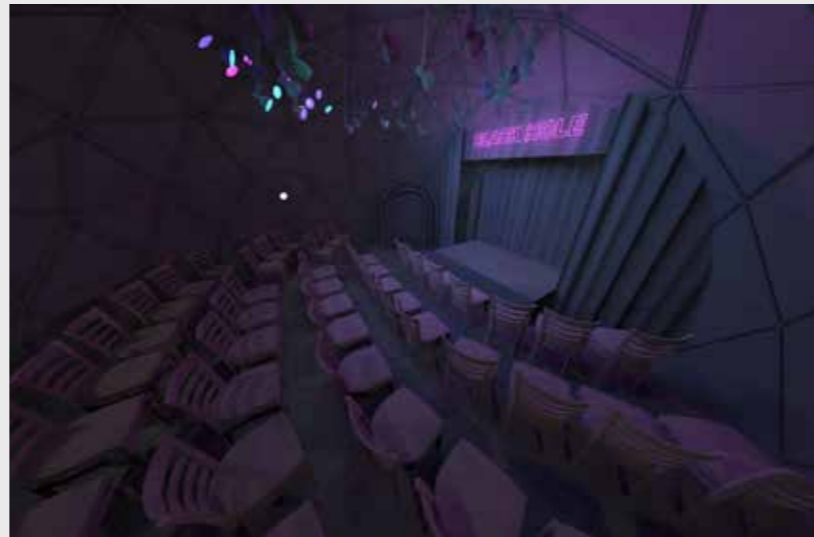
Dimensions



All measurements in metres.

Note:

- Set-up on grass or concrete, using either:
- earth anchors (70cm engineered pegs)
 - ballast (20 x 50kg blocks)



The Observatory

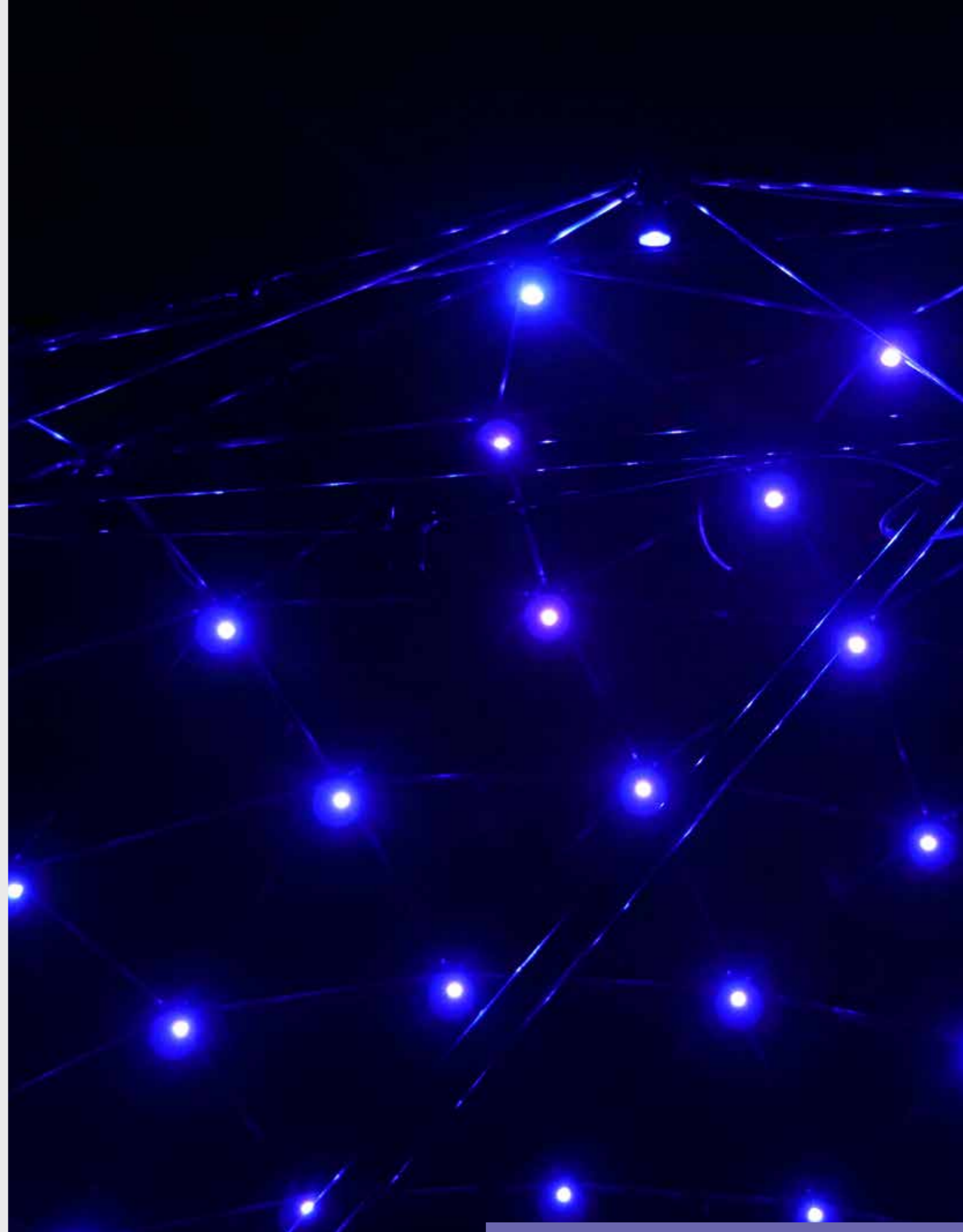
The Observatory is an open air architectural space. At each intersection of the Geodesic Dome is an individually addressable LED light, creating a fully programmable LED matrix. This versatile and modern space can be used as a stage for performers with audiences on the outside looking in, or, as a venue/ bar/space with audiences within the structure.

SPECIFICATIONS

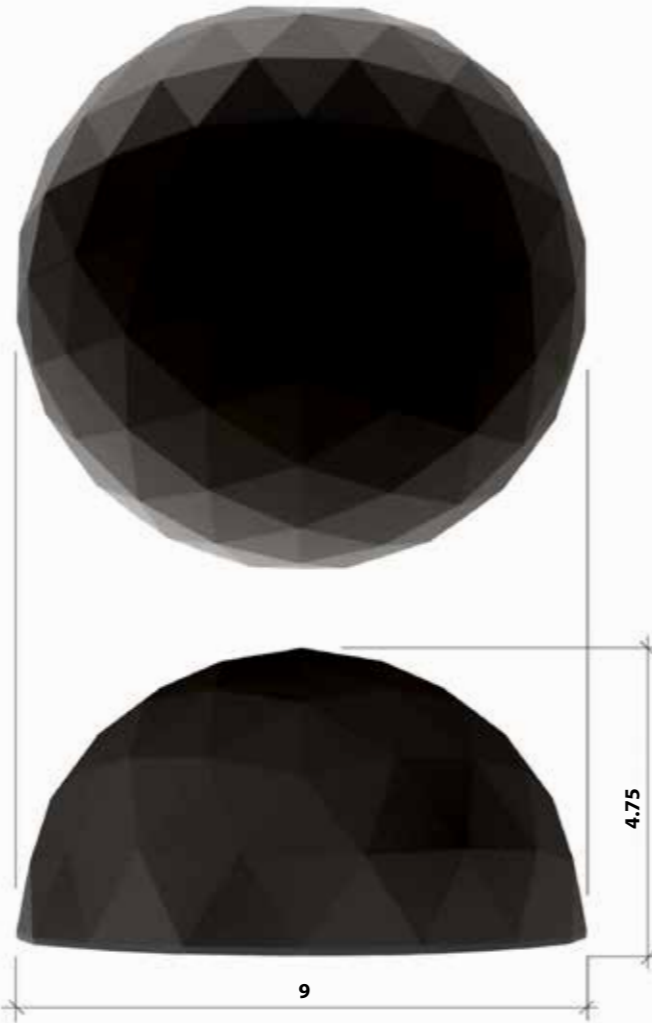
Capacity	40 - 100 pax
Full Venue set-up	8 hours
Full Venue Bump out	5 hours
Diameter	9.5m
Peak Height	4.75m
Wind Rating	n/z
Aeril Rigging	No

“Like moth to flame, The Observatory was utterly captivating for audiences at our festival. Totally world class.”

- Carla Steed, Cactus Events



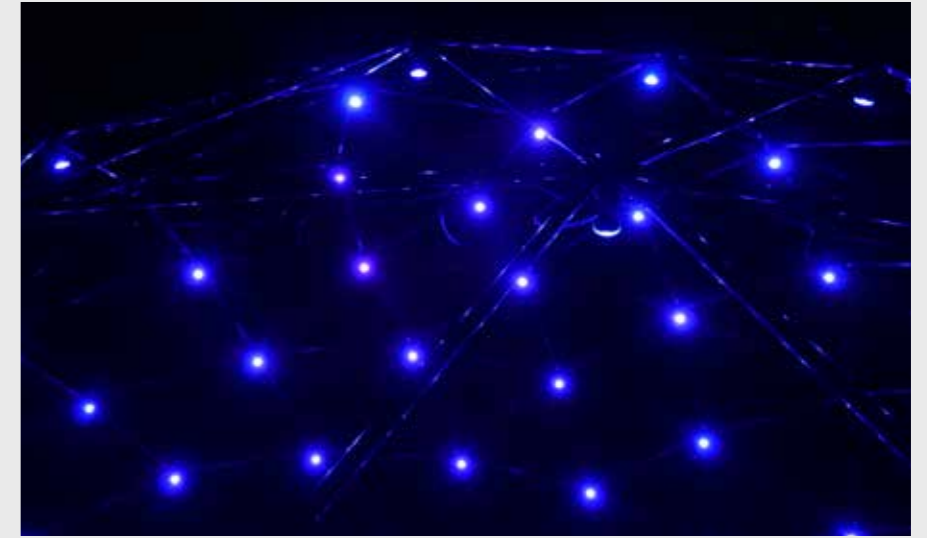
Dimensions



All measurements in metres.

Note:

Lights are customisable & can be programmed to suit any colour palette, or even respond to music.



GET IN TOUCH TO HIRE OUR BESPOKE VENUES

info@colossal.co.nz
02102363028



04/06/2022 - Our venues are evolving structures. Find the current version by [CLICKING HERE](#).

THE
MAMMOTH

THE
BLACK
HOLE

The Observatory